

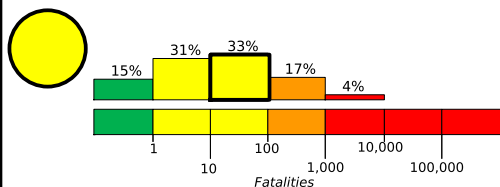
# M 6.0, NORTHERN ITALY

Origin Time: Sun 2012-05-20 02:03:52 UTC (04:03:52 local)

Location: 44.92°N 11.33°E Depth: 10 km

Created: 1 week, 5 days after earthquake

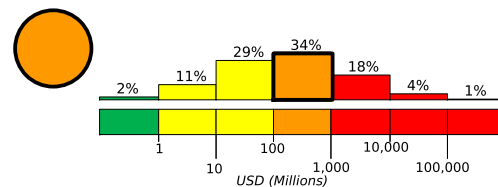
## Estimated Fatalities



Orange alert level for economic losses. Significant damage is likely and the disaster is potentially widespread. Estimated economic losses are less than 1% of GDP of Italy. Past events with this alert level have required a regional or national level response.

Yellow alert level for shaking-related fatalities. Some casualties are possible.

## Estimated Economic Losses

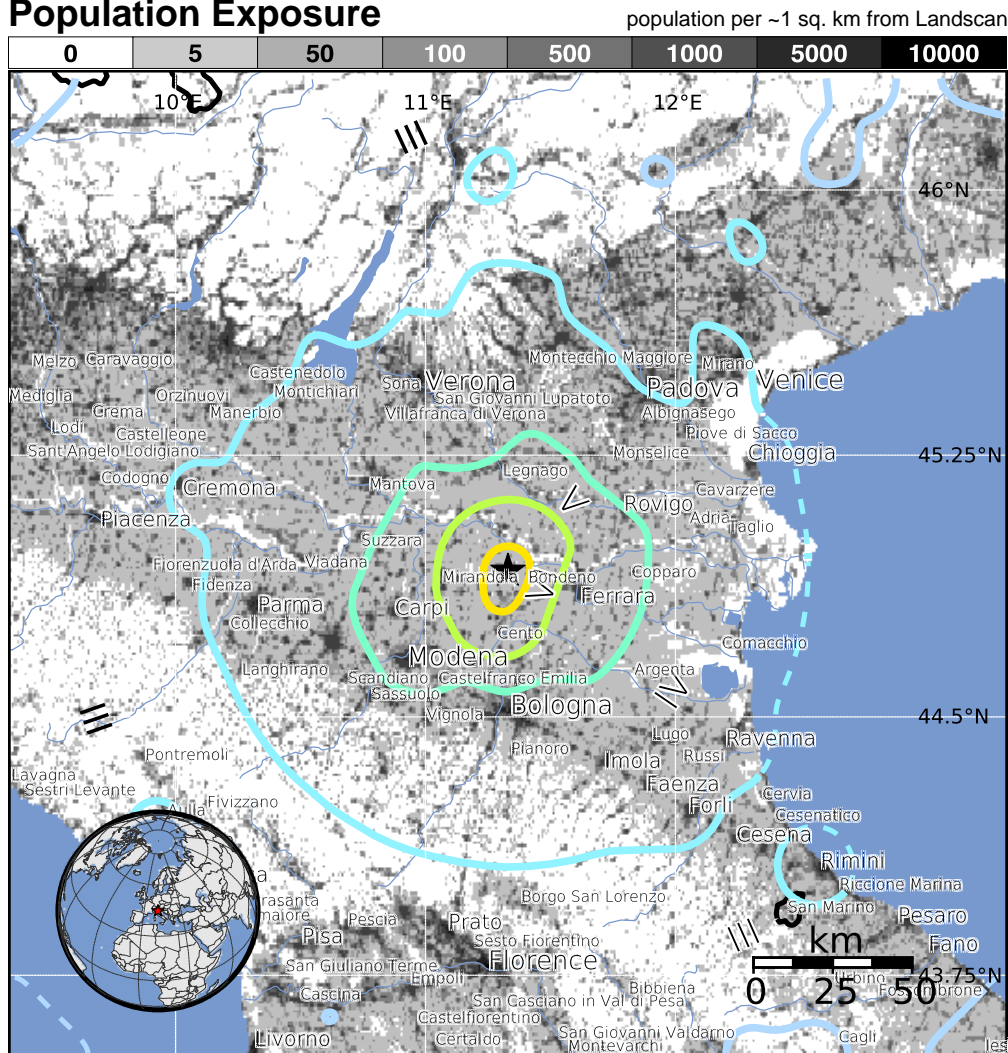


## Estimated Population Exposed to Earthquake Shaking

ESTIMATED POPULATION EXPOSURE (k = x1000)	- - *	10,268k*	5,978k	1,027k	199k	38k	0	0	0
ESTIMATED MODIFIED MERCALLI INTENSITY	I	II-III	IV	V	VI	VII	VIII	IX	X+
PERCEIVED SHAKING	Not felt	Weak	Light	Moderate	Strong	Very Strong	Severe	Violent	Extreme
POTENTIAL DAMAGE	Resistant Structures	none	none	none	V. Light	Light	Moderate	Moderate/Heavy	Heavy
	Vulnerable Structures	none	none	none	Light	Moderate	Moderate/Heavy	Heavy	V. Heavy

\*Estimated exposure only includes population within the map area.

## Population Exposure



## Structures:

Overall, the population in this region resides in structures that are a mix of vulnerable and earthquake resistant construction. The predominant vulnerable building types are unreinforced brick with mud and mid-rise nonductile concrete frame with infill construction.

## Historical Earthquakes (with MMI levels):

Date (UTC)	Dist. (km)	Mag.	Max MMI(#)	Shaking Deaths
1997-09-26	230	6.0	VIII(10k)	11
1997-09-26	236	5.7	VIII(2k)	14
1976-05-06	237	6.5	IX(55k)	965

Recent earthquakes in this area have caused secondary hazards such as landslides that might have contributed to losses.

## Selected City Exposure

from GeoNames.org

MMI City	Population
VII Finale Emilia	15k
VII Bondeno	16k
VII Felonica	2k
VII Ficarolo	3k
VI Sermide	6k
VI Sant'Agostino	6k
IV Bologna	371k
III Venice	271k
III Trento	105k
III Florence	372k
III San Marino	29k

bold cities appear on map

(k = x1000)

PAGER content is automatically generated, and only considers losses due to structural damage. Limitations of input data, shaking estimates, and loss models may add uncertainty.

<http://earthquake.usgs.gov/pager>

Event ID: usb0009tk0